

Rural Development Tuki Association (RDTA), Dolakha

General information of RDTA in summary:

Type of the organization	Non-Governmental Social Development Organization.
Contact details [address, telephone, fax, email]:	Bhimeshwor Municipality-1, Charikot, Dolakha. Phone: 049-4-21112, 4-21009 Email: Info@rdtadolakha.org Web: www.rdtadolakha.org
Contact Person	Jaya Prasad Dahal-Chairman-9841964820 Purshartha Shrestha-Executive Director Mobile: 9851200933 Email: purshartha@rdtadolakha.org
Registration date and serial number with concerned organization:	- Registered with District Administrative Office Dolakha: - Registration Date: 2048/03/31 [July 16,1991] Registration Number: 24/047/048 - Social Welfare Council Affiliation Number:-559 - NGO Federation of Nepal Regt. No:- M.174/050/51
Renewal of the registration	District Administrative Office Dolakha: 2073/74
Date started to work:	2047/11/01 [February 1991]
Govt. of Nepal Internal Revenue Office	PAN No:- 301598439 Certificate of Income Tax Free Organization
Last Audited Year	F.Y.2072/73 B.S. (2015/16 A.D.)
System of Book-keeping	Double Entry Book Keeping System
Number of members	Total 606 (Male-364, Female- 242)

RDTA at Glance:

Literally, *Tuki* is a traditional kerosene lamp used in rural Nepalese households for lightening purpose. However the ‘Tuki’ that was imagined through Developmental Approach is a model leader farmer who is empowered on various social developmental phenomena and can disseminate what they have learned in the community. So Tukis are metaphorized as agency for disseminating knowledge and pioneering developmental efforts in the village.

Tuki got empowerment training during Integrated Hill Development Project (IHDP) launched by Government of Nepal (then His Majesty the Government of Nepal) and Swiss Agency for Development and Cooperation/Nepal (SDC/N). These Tuki later united to establish RDTA to keep the society in regular developmental momentum.

Rural Development Tuki Association (RDTA) is a pioneering developmental organization established in 1991 in Dolakha. RDTA gained its legal status with registration under Government of Nepal, District Administrative Office, Dolakha in 1991-7-16 (Registration no. 24/047/048). It is registered in Social Welfare Council and NGO Federation of Nepal.

Tuki Approach in the field of development and cooperation is one of the most recognized models acknowledged by the Government of Nepal (then His Majesty the Government of Nepal). King Birendra Shah officially recommended his government for the extension of this approach throughout Nepal in 1986 AD during his visit to Central Development Region of Nepal. Considering its gravity, Tuki Approach has been included in various academic curricula.

Vision:

RDTA envisions strengthened, dignified, inclusive, democratic, and self-reliant society

Mission:

Give momentum to sustainable community development initiative through good governance, community empowerment, and sustainable mobilization of local resources, institutional development and productivity enhancement

Goal:

The association aims to uplift the living standard of marginalized people.

Objectives:

The association has following objectives:

- To contribute in development and promotion of complete agriculture cycle (production, storage, processing, marketing, distribution and consumption) for creating employment and or self-employment, advancement of entrepreneurship, livelihood and ultimately rights of rural communities.
- Support to carry out actions for promotion of education, health, sanitation, community infrastructures, right and advocacy, disaster risk management, local resource based small and medium enterprises keeping environment friendly complete agriculture cycle in the central point.
- Implement different programs for establishment of the rights of the communities needing special social protection and security (marginalized, deprived, orphans, elderly, and disable) and ensuring their social justice.
- Integrate different local, national and global contemporary development issues (Agro-entrepreneurships, inclusive development, disaster risk management, climate change impact mitigation and adaptation, environment protection etc.) through the organizational policy, strategy and programs.
- Bridge rural-urban development relationship and extend environment friendly entrepreneurship development for reduction of urban poverty.

- Cooperate with financial institutions, including agriculture cooperatives for their capacity development to promote poor, farmer and youth entrepreneur friendly investment.
- Promote internal resources, good governance, capacity of human resource, administrative improvement and organizational capacity development for sustainable and self reliant development of the organization.
- Contribute for the overall livelihood improvement of *Tuki* members, including their economic and social transformation.
- To develop Tuki Resource Center for the extension of best examples of integrated rural development, extending partnership with local, national and international governmental, non-governmental and private institutions, thematic federations for the cooperation and coactions in the sectors of documentation, research, investigation, trial, promotion and dissemination.
- Conduct action and applied research on different national and international issues like climate change, natural resource and biodiversity, agriculture and soil science, livestock, food security and public health.
- Contribute in strengthening democratic practices, community conflict management, reconstruction, social peace promotion and cultural conservation.
- Support rural communities for the organization, empowerment and mobilization in order to ensure integrated, participatory, inclusive and equitable development process.

GOVERNANCE AND MANAGEMENT

Organizational Structure:

RDTA is the organization of leader farmers in the district. General Assembly is the apical structure which forms elected Executive Committee. This executive committee is governing body of the organization responsible for decision making and recruitment of working staffs.

Dolakha district is subdivided into eleven areas similar to DDC areas for implementation of Tuki Approach. In each area, there is an area committee. These committees are elected by the area level assembly of all Tuki members. Village committees in VDC level and municipal committees in the municipality are foundations of the association.

Details of RDTA's institutional and organizational structures are presented pictorially in Annex.

Inclusion in the Organization:

1. General Membership:

S. No	Ethnicity	Male	Female	Total
-------	-----------	------	--------	-------

S. No	Ethnicity	Male	Female	Total
1	Dalit	7	5	12
2	Janajati	164	112	276
3	B/C	193	125	318
Total		364	242	606

Percentage distribution of general member of RDTA is as follows:

Total number & %	Male	Female	Dalit	Janjati	Newar	Muslim	B/C	Other
(N) 606	364	242	12	228	48	0	318	0
(%) 100%	60%	40%	2%	37.6%	7.9%	0%	52.5%	0%

2. Executive Committee:

S. No	Ethnicity	Male	Female	Total
1	Janajati	4	3	7
2	B/C	7	2	9
Total		11	4	16

Detail Profile of governing board of RDTA:

Full name	Position	Sex	Cast / Ethnicity
Jaya Prasad Dahal	Chairperson	Male	Brahmin/Chhetri
Prem Kumari Chaulagain	Vice-chairperson	Female	Brahmin/Chhetri
Haribansha Chaulagain	Secretary General	Male	Brahmin/Chhetri
Makar Dhoj Pakhrin	Treasurer	Male	Tamang/Janajati
Shova Pokharel	Secretary	Female	Brahmin/Chhetri
Harkaman Tamang Pakhrin	Immediate Past Chairperson	Male	Tamang/Janajati
Badri Bahadur Katuwal	Member	Male	Brahmin/Chhetri
Kalyani Kafle	Member	Male	Brahmin/Chhetri
Lal Bahadur Ghising	Member	Male	Tamang/Janajati
Nara Maya Tamang	Member	Female	Tamang/Janajati
Kali Sherpa	Member	Female	Sherpa/Janajati
Doma Jirel	Member	Female	Jirel/Janajati
Ram Prasad Pakuwal	Member	Male	Brahmin/Chhetri
Ghanashyam Oli	Member	Male	Brahmin/Chhetri

Full name	Position	Sex	Cast / Ethnicity
Rine Sherpa	Member	Male	Sherpa/Janajati
Kshetra Lal Regmi	Member	Male	Brahmin/Chhetri

Human Resources at RDTA

There are currently more than 130 staffs working with RDTA. They are both field level and district level and appointed under different projects that RDTA is implementing in the district in partnership with different organizations. Profile of key staffs (mainly Officer and above level) is given in the Annex 3.

Policy Highlights:

- RDTA has financial and procurement policy.
- It has HR policy.
- RDTA has alcohol and tobacco control policy to prohibits the use of alcohol and tobacco in any forms for its staffs and general members when associated with the Organizational Programs.
- It has child and gender inclusion policy.
- It has zero tolerance policy to gender sensitive issues.
- RDTA also has anti-corruption policy.

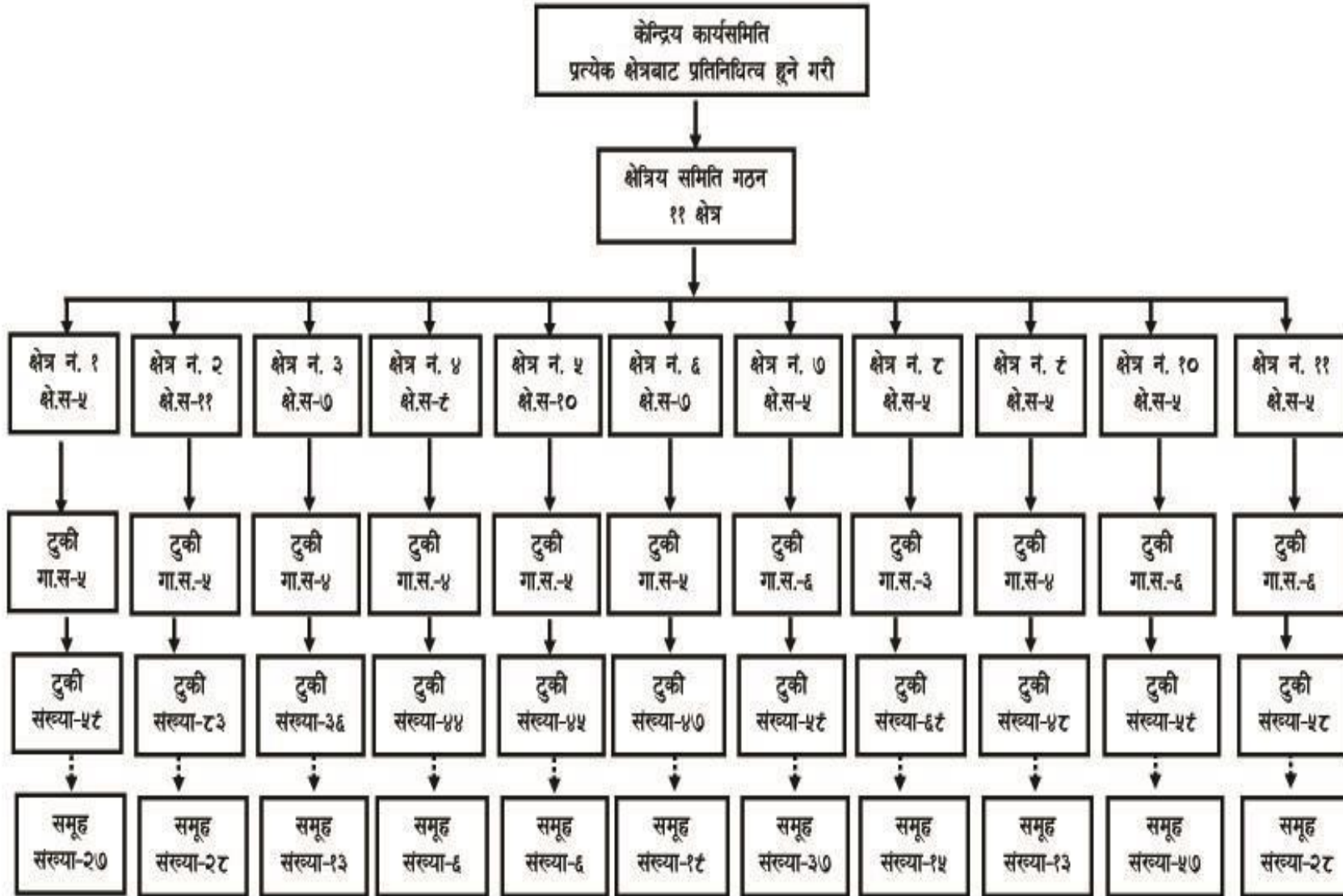
Working Procedure

RDTA always places rural poor communities into its focus. Needs of the community are identified in participatory method. Women, children and backward societies are given prime importance and programs are also operated in full participation of rural community. This work has placed the organization as one of the most successful organizations in the district. It works applying the People Centered Development (PCD) approach and has been successful in its goal.

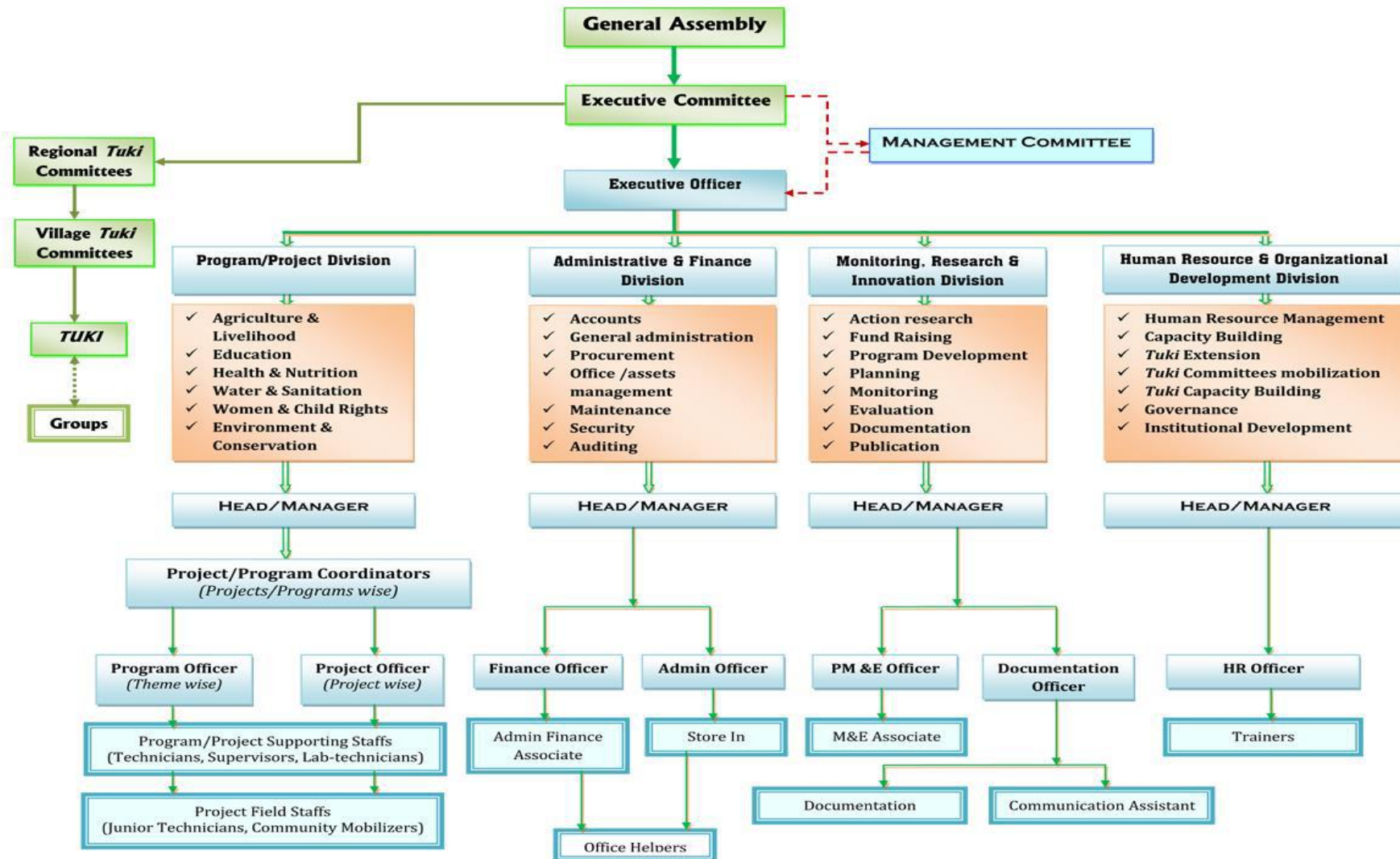
Operational Programs:

Currently RDTA is implementing 10 different projects in partnerships with different development agencies, national and international organizations. Detail list of currently implemented projects and major projects that RDTA implemented in the past is given in the Annex.

Annex 1: RDTA Institutional Structure:



Annex 2: RDTA Organizational Structure:



Annex 3: Profile of key staffs of RDTA

Full name	Position	Academic Qualification	Sex	Cast & Ethnicity	Expertise	Years of Experience
Purshartha Shrestha	Executive Director	MA Sociology	Male	Newar	<ul style="list-style-type: none"> ○ Organizational management ○ Bottom-up approach of community development ○ Social mobilization ○ Livelihood and income generation ○ Women empowerment ○ Coordination and networking 	25 years
Mukunda Dahal	Admin and Finance Manager	Bachelor in Business Studies	Male	Chhetri	<ul style="list-style-type: none"> ○ Financial management ○ Book keeping and record management ○ Financial reporting 	25 Years
Damodar Timalsina	Institutional Development Head	Intermediate in Mechanical Engineering	Male	Brahmin	<ul style="list-style-type: none"> ○ Tuki conceptualization, training, formation and mobilization ○ Social mobilization and group approach of development (people-centered community development) ○ Agriculture extension and livelihood diversification, income generation ○ Coordination and networking 	35 Years
Ramchandra Singh Shrestha	Asst. Project Manager (WOCELIP)	B.Sc. Agriculture	Male	Newar	<ul style="list-style-type: none"> ○ Agriculture technology transfer and commercialization ○ Farmers group formation, mobilization and capacity upgrading for the improved agricultural productivity ○ Agro-based livelihood improvement and income generation 	15 Years
Pushpa Raj Mainalee	Project Manager (DRMP)		Male	Brahmin	○	
Tara Pokherel	Project Manager (DRMP- DRR)		Male	Brahmin	○	

Shuva Chandra Rai	Program Coordinator (SABAL)	BA (Humanities) MA Political Science	Male	Janajati	<ul style="list-style-type: none"> ○ Project management, staffs and social mobilization. ○ Implementation of Climate Change, DRR, Livelihood and Agriculture related project activates 	11 Years
Nishchal Shrestha	WASH Officer	BE Civil	Male	Newar	○	
Nirajan Dahal	Engineer	BE Civil	Male	Brahmin	○	
Aashis Rai	Shelter Coordinator	BE Civil	Male	Janajati	○	
Kiran Shrestha	Field Coordinator (Suaahara)	MA in Rural Development	Male	Newar	<ul style="list-style-type: none"> ○ Project management, staffs and social mobilization. ○ Implementation of nutrition, hygiene and sanitation interventions ○ School education and promotion of school libraries 	7 Years
Saugat Baral	Program Coordinator (NHSSP)	Masters in Public Health	Male	Brahmin	<ul style="list-style-type: none"> ○ Public health research and documentation ○ Nutrition and hygiene 	1 Year
Narayan Chaulagai	Account Officer (Suaahara)	Masters in Business Studies	Male	Brahmin	<ul style="list-style-type: none"> ○ Account keeping ○ Financial reporting ○ Cooperative management 	5 Years
Deepa Karki	Finance Officer (DRMP)	Bachelor in Business Administration	Female	Chhetri	<ul style="list-style-type: none"> ○ Office administration ○ Book and record keeping ○ Financial reporting 	1 Year
Shyam Kumar Dahal	Education Officer (DRMP-Education & Protection)	Bachelor in Education	Male	Chhetri	<ul style="list-style-type: none"> ○ Child protection ○ School education and quality checking ○ Training management 	8 Years
Promod Acharya	Project Officer (DRMP-FSL)	B.Sc. Agriculture	Male	Brahmin	<ul style="list-style-type: none"> ○ Agriculture entrepreneurship ○ Livelihood ○ Agriculture technology transfer ○ Food security 	3 Years

Annex 4: Details of currently implemented projects and major project that were implemented in the past years:

Program Name	Program Objectives	Start and end date (MM/YY)	Source of funding	Total Budget	Geographic coverage VDCs (Name and number)	Target HH and pop.	Key activities
SUAAHARA-II	<ul style="list-style-type: none"> To improve household health and nutrition behavior. To increase uses of quality nutrition and health services in woman and children. To increase consumptions of diversified and nutritious food in woman and their family. To strengthening coordination on nutrition between government and other stakeholders. 	August 2016 to July 2021	USAID through Helen Keller International	9372815 (Budget of August 2016 to July 2017)	Whole Dolakha district (All 48 VDCs and 2 Municipalities)	21000 HH (1000 days mother and children)	<ul style="list-style-type: none"> Essential nutrition action and hygiene action trainings and orientations Organize food demonstration session. Celebrate key life events by acknowledging a 1000 days mother. Identify ideal families and acknowledge them. Celebrate nutrition related days such Iodine Month, Breast feeding Week at district and VDC level. Support to regularize DWASHCC and VWASHCC review meetings and workshop. Support to sanitation movement- ODF and Post ODF campaign Support to HFOMC meeting, FCHV meeting and provide essential materials to health facilities. Training to service providers on nutrition like; CB-IMNCI, CMAM. Materials support to VMFs, LRPs and capacity enhance. Support poultry to 1000 days mothers, FCHVs, VMFs. Establishment of HFP groups and support to regularize.
Sustainable Action for Resilience and Food Security (SABAL)	<ul style="list-style-type: none"> Increase income of the vulnerable communities of the project area. 	2014-2019	USAID	34547750	20 VDCs of Dolakha district	11300 HHs	<ul style="list-style-type: none"> Capacity building training on climate smart agriculture, livestock and natural resource management Skill enhancement of farmer's groups, saving and credit groups and cooperatives
Earthquake Effected School Reconstruction Project	<ul style="list-style-type: none"> To Equipped 12 schools with necessary infrastructure including WASH facilities 	July 2016 to June 2017	Norwegian Embassy / FORUT Norway	180000000	5 VDCs of Dolakha District (Chilankha, Khopachangu, Babare,	2500 Students	<ul style="list-style-type: none"> Child friendly, disable friendly and earthquake assistant building construction WASH facilities support at schools

Program Name	Program Objectives	Start and end date (MM/YY)	Source of funding	Total Budget	Geographic coverage VDCs (Name and number)	Target HH and pop.	Key activities
					Lamidanda, Laduk VDCs		
WASH Program	<ul style="list-style-type: none"> To promote ODF restoration. To improve community and school WASH To community and institution level hygiene promotion 	January 2016 to March 2017	Save the Children	30000000	8 VDCs of Dolakha district	45000 approximately	<ul style="list-style-type: none"> Materials support to water user groups Hygiene kit distribution Latrine materials support Community and institutional level orientation
Promoting inclusive community Based disaster preparedness in the Recovery and Reconstruction of earthquake affected areas of Nepal	<ul style="list-style-type: none"> To strengthen community and institutional capacity on disaster risk management through the implementation of inclusive and flexible CBDRM, improved coordination, information management and policy advocacy. 	August 2016 to October 2017	European Union Humanitarian Aid/ Save the Children	13955411	Kabre, Chanku, Marbu and Namdu VDCs of Dolakha district	10000 population approximately	<ul style="list-style-type: none"> Form and capacity building of LDRMC, Civil society organization and relevant stakeholders. Mainstreaming of DRR issues to VDC and District level planning process. Strengthen and capacitate of DDRC and DOC in information management
Damage Drinking Water Restoration Program (WASH)	<ul style="list-style-type: none"> To restorage of damage drinking water scheme. 	December 2016 to March 2017	Plan International	12600000	12 (Lapilang, Lakuri, Magapauwa, Bhusafeda, Dudhpokhari, Katakuti, Fasku, Pawati, Bhedpu, Ghyangsuka Thokar and Dandakharka VDCs	1200 HH	<ul style="list-style-type: none"> Materials support to water user group. Masson training Water scheme maintenance training Child awareness training
Nutrition Program	<ul style="list-style-type: none"> To Improve nutritional status of Dolakha district. To support Outreach 	September 2015 to March 2017	Save the Children	15000000	Whole Dolakha district (All 48 VDCs and 2	20000 population	<ul style="list-style-type: none"> Support to OTC. SAM and MAM cases finding and remedies activities.

Program Name	Program Objectives	Start and end date (MM/YY)	Source of funding	Total Budget	Geographic coverage VDCs (Name and number)	Target HH and pop.	Key activities
	Treatment Center.				Municipalities		<ul style="list-style-type: none"> ○ Materials support to OTC. ○ Training to HF, FCHVs about CBIMNCI. ○ Support to pregnant, lactate mother and children.
ODF Restoration Program (WASH)	<ul style="list-style-type: none"> • ODF restoration at 4 VDCs of Dolakha district • Sensitize and awareness raise about total sanitation 	November 2015 to November 2016	Plan International	13,000,000	Lamabagar, Gaurishankar, Orang and Bulung VDCs	2911 HH	<ul style="list-style-type: none"> ○ Latrine materials support ○ VWASHCC, DWASHCC meetings ○ Triggering training. ○ Masson training ○ Community and School WASH materials support program
Women and Children Empowerment and Livelihood Improvement Project (WOCELIP)	<ul style="list-style-type: none"> • Increase households income and diversify livelihood options • Improve nutritional status of women and children • Improve food security status • Increasing women's influence over local resources and governance • Enhance the women and adolescents ability to identify reproductive and sexual health issues, shared among peers and discussed for solutions • Improve nutritional conditions of women and children • Improve hygiene and sanitation status of the community 	June 2008 to December 2018	NORAD through FORUT Norway	132380000	8 VDCs of Dolakha namely Alampu, Bigu, Babare, Khopachagu, Chilankha, Kalinchok, Lamidanda and Laduk	7500 HHs and total population of 22722	<ul style="list-style-type: none"> ○ Sustainable VDC Planning incorporating Climate Change Adaptation Plan of Action (LAPA) in a participatory and inclusive process ○ Women literacy and empowerment through REFLECT Centers ○ Women farmers group formation, strengthening and mobilization for income generation, economic empowerment and capacity building ○ Agricultural technology transfer trainings, technical back-stopping, inputs and materials support (seeds, agri-tools, plastic tunnels etc.) ○ Promotion of model kitchen gardening, commercial production of cash crops and spices, seasonal and off-seasonal vegetable production ○ Plant and livestock mobile clinics, promotion of biological and organic pesticides and technologies ○ Construction of irrigation canal, promotion of sprinkle and drip irrigation systems ○ Improved seed production and marketing ○ Health institution strengthening through infrastructure development, equipments and material support ○ ANC and PNC to women through health facility ○ Nutrition and sanitation education (trainings and orientations) to pregnant women and community

Program Name	Program Objectives	Start and end date (MM/YY)	Source of funding	Total Budget	Geographic coverage VDCs (Name and number)	Target HH and pop.	Key activities
							<ul style="list-style-type: none"> members ○ Toilet construction support, sanitation awareness and ODF campaigning ○ Drinking water system construction and renovation ○ Formation and mobilization of child right forums and adolescent girls groups
Earthquake Emergency Response Phase I & II (A joint emergency response of TUKI and CWIN Nepal)	<ul style="list-style-type: none"> • Provide immediate relief • Contribute in early recovery 	May 2015 to December 2015	Ministry of Foreign Affair, Norway	73800000	8 VDCs of Dolakha namely Alampu, Bigu, Babare, Khopachagu, Chilankha, Kalinchok, Lamidanda and Laduk	7500 HHs and total population of 22722	<ul style="list-style-type: none"> ○ Food items distribution to each families ○ Tarpaulin distribution to each families ○ CGI Sheets distribution in Alampu and Khopachangu VDCs ○ Temporary Learning Centers (TLC) preparation, educational support to schools and children ○ Agriculture seed, materials and tools distribution ○ Drinking water schemes renovation ○ Agriculture training and technical support ○ Temporary health-post construction, equipment and medicine support ○ Mobile health camps ○ Post-disaster women and child protection awareness through mobile classes, REFLECT Centers, Child Protection Desks, psychosocial counseling and first aid etc.
SUAAHARA (Good Nutrition) Program	<ul style="list-style-type: none"> • To improve household health and nutrition behavior. • To increase uses of quality nutrition and health services in woman and children. • To increase consumptions of diversified and nutritious food in woman and their family. 	August 2012 to March 2016	USAID through Save the Children & Helen Keller International	64639860	Whole Dolakha district (All 48 VDCs and 2 Municipalities)	21000 HH (1000 days mother and children)	<ul style="list-style-type: none"> ○ Essential nutrition action and hygiene action trainings and orientations ○ Organize food demonstration session. ○ Celebrate key life events by acknowledging a 1000 days mother. ○ Identify ideal families and acknowledge them. ○ Celebrate nutrition related days such Iodine Month, Breast feeding Week at district and VDC level. ○ Support to regularize DWASHCC and VWASHCC review meetings and workshop. ○ Support to sanitation movement- ODF and Post

Program Name	Program Objectives	Start and end date (MM/YY)	Source of funding	Total Budget	Geographic coverage VDCs (Name and number)	Target HH and pop.	Key activities
	<ul style="list-style-type: none"> To strengthening coordination on nutrition between government and other stakeholders. 						<ul style="list-style-type: none"> ODF campaign Establishment of Hand Washing Station/corner. Support to HFOMC meeting, FCHV meeting and provide essential materials to health facilities. Training to service providers on nutrition like; CB-IMNCI, CMAM. Support DHO/RHCC review meetings. Materials support to VMFs, LRP and capacity enhance. Support poultry to 1000 days mothers, FCHVs, VMFs. Establishment of HFP groups and support to regularize. Coordinate with line agencies and conduct joint monitoring visit, meetings.
Distribution of agriculture and livestock support inputs to vulnerable households in the earthquake affected district of Dolakha	<ul style="list-style-type: none"> Increase the resilience of livelihoods to threats and crisis. 	September 2015 to August 2016	Food and Agriculture Organization of United Nations (FAO)	13500000	Whole Dolakha district (48 VDCs and 2 Municipalities)	32902 HHs reached.	<ul style="list-style-type: none"> Winter vegetable seed distribution Wheat seed distribution Mineral mixture distribution Plastic tunnel establishment and plastic distribution. 23 irrigation canal reconstruction Two rustic store rehabilitation UMMB Machine distribution CGI Sheets distribution Spring crop (maize and cowpeas) seeds distribution Grain storage steel drum distribution Mini power tiller and threshers distribution
Rebuilding family farming in response to earthquake in Nepal	<ul style="list-style-type: none"> Support to rebuild farming of the earthquake affected poor and vulnerable families 	September 2015 to December 2016	Diakonie Katastroph enhilfe through Li-BIRD	3625725	10 VDCs of Dolakha namely Lapilang, Lamidanda, Laduk, Bulung, Orang, Kharey, Chankhu,	19318 HHs and approximately 100000 population	<ul style="list-style-type: none"> Locally adapted and climate-resilient crops and vegetables (wheat, lentil, mustard and pea, rice, maize) seed distribution. Super storage bags distribution Restoration of soil moisture and fertility through the promotion of labor-efficient and women-friendly agricultural tools and machineries

Program Name	Program Objectives	Start and end date (MM/YY)	Source of funding	Total Budget	Geographic coverage VDCs (Name and number)	Target HH and pop.	Key activities
					Marbu, Suri and Jhyaku		<ul style="list-style-type: none"> ○ Silpaulin plastics for green house farming
Disaster Response Management Program (DRMP)-Health	<ul style="list-style-type: none"> • Ensure access to quality curative and preventive health services • District and health facility management system strengthened and enabled for emergency preparedness • Establish access to mental health and psychosocial support services (MHPSS) through outpatient and community based interventions 	August 2015 to December 2015 (will be extended to one more year)	Save the Children	3810686	5 VDCS of Dolakha namely Jhyaku, Jungu, Kshetraba, Namdu and Kabre	122238 children, 11217 reproductive age women	<ul style="list-style-type: none"> ○ Access the quality service through reactivation of the FCHVs, health mother groups, child club members, adolescents and community people ○ Capacity building of the health facility staffs ○ Support to functional referral system ○ School health education ○ MHPSS training to health facility staffs, FCHVs ○ MHPSS orientation to traditional healers, women leaders, children and child club members
DRMP (Food Security and Livelihood, Shelter and Cash Transfer)	<ul style="list-style-type: none"> • Contribute for food security and entrepreneurship for the earthquake affected families • Support to construct earthquake resistant housing 	November 2015 to March 2017	ECHO Save the Children	148507133	5 VDCS of Dolakha namely Jhyaku, Jungu, Kshetraba, Namdu and Kabre	2500 HHs	<ul style="list-style-type: none"> ○ Training for safe shelter construction ○ Demonstration and model material preparation ○ Disaster risk reduction training ○ Agriculture technology transfer training ○ Cash distribution ○ Financial literacy training
DRMP (Education, Protection, WASH)	<ul style="list-style-type: none"> • Promote child protection during emergency • Support to re-establish school education after emergency • Support to ensure child rights during and after emergency 	June 2015 to December 2015	UNICEF, UNHCR, QFM, DANIDA, USAID, SHO through Save the Children	11368000	5 VDCS of Dolakha namely Jhyaku, Jungu, Kshetraba, Namdu and Kabre	Approximately 6000 children	<ul style="list-style-type: none"> ○ Construction of Temporary Learning Centers (TLCs) in 40 schools ○ Gender Friendly Latrines in 15 schools ○ Teachers Training on Psychosocial Support ○ Child Friendly Spaces establishment ○ Establish mini-fun park ○ Support vulnerable child for their education ○ Education and recreational support in 40 schools ○ ECD and Student Kits in 40 schools
Soil Test	<ul style="list-style-type: none"> • To enhance agricultural 	December	Soil	1575000	Whole District	1131 HHs/	<ul style="list-style-type: none"> ○ Soil sample collection training

Program Name	Program Objectives	Start and end date (MM/YY)	Source of funding	Total Budget	Geographic coverage VDCs (Name and number)	Target HH and pop.	Key activities
Laboratory and Mobile Soil Camps	productivity through sustainable soil management	2013-	Directorate , DDC Dolakha DADO/ GoN and FORUT Norway		and can provide service to neighboring districts as well	approximately 5600 population	<ul style="list-style-type: none"> ○ Soil sample analysis and recommendation ○ Mobile soil camps ○ Continuous service and counseling in the lab at any time in need basis
Vulnerability due to Climate Change Adaptation Support Project	<ul style="list-style-type: none"> ● Increase climate change resiliency of disadvantaged communities ● Promote climate change adaptation strategies 	February to April 2011	Li-BIRD	50000	Bhirkot and Namdu VDC	51 HHs/ approximately 300 peoples	<ul style="list-style-type: none"> ○ Group revitalization ○ Group training on importance of local species for sustainable farming technology and integrated pest management ○ Preparation of Agro-biodiversity data base ○ Climate Change Adaptability awareness ○ Improved local crop and vegetable seed distribution
Gaurishankar Conservation Area Support Project	<ul style="list-style-type: none"> ● Good governance and sustainable development in the VDC through participatory planning and implementation process 		National Trust for Nature Conservation Nepal/ Development Fund Norway	900000	Chuchure VDC of Ramechhap, Chilankha VDC of Dolakha and Ghorthali VDC of Sindhupalchok Districts	Whole VDC	<ul style="list-style-type: none"> ○ Demographic survey ○ Natural resource survey ○ Climate change vulnerability study and adaptation planning ○ Ward level participatory planning ○ VDC Level planning workshops ○ 5 Years Sustainable Development Book Publication
Seed production (a joint initiatives of TUKI and DADO)	<ul style="list-style-type: none"> ● Enhance livelihood and income source of farmers through the improved seed production. 	2012 and 2013	DADO/GoN	450000	Sundrawoti, Sunkhani, Jhyaku, Lamidanda, Khopachangu, Chilankha and Kalinchok	74 HHs and approximately 400 people	<ul style="list-style-type: none"> ○ Different types of trainings and orientation on seed production, harvesting, grading and post-harvesting ○ Foundation seed support ○ Technical support ○ Disease and pest management support
Pro-poor targeted goat farming project (A joint project	<ul style="list-style-type: none"> ● Promote local livelihood of pro-poor (Thami) communities 	July-December 2013	DLSO/GoN	300000	Khopachangu VDC of Dolakha district	50 HHs/ approximately 300 people	<ul style="list-style-type: none"> ○ Goat farming training ○ Goat distribution (2 goats per HHs) ○ Improved breeding buck distribution ○ Agro-forestry and fodder promotion

Program Name	Program Objectives	Start and end date (MM/YY)	Source of funding	Total Budget	Geographic coverage VDCs (Name and number)	Target HH and pop.	Key activities
of TUKI, DLSO and VDC)							
Sustainable Soil Management Program	<ul style="list-style-type: none"> • Increase agricultural productivity • Promote sustainable soil management practices • Diversification of income sources and livelihood options • Promote environment friendly agriculture practices 	March 2005 to December 2010	Swiss Agency for Development and Cooperation through LiBIRD	3050000	8 VDCs of Dolakha namely Jhyaku, Jungu, Namdu, Dandakharka, Fasku, Lamidanda, Bhedpu, Dudhpokhari	953 HHs and approximately 5000 population	<ul style="list-style-type: none"> ○ Group formation and mobilization ○ Farm Yard Management ○ Legume crops and rotational farming promotion ○ Integrated Plant Nutrition Supply (IPNS) promotion ○ Fodder and terrace branch grass promotion ○ Soil testing and management recommendation ○ Village Agriculture, Forest and Environment Committee formation and mobilization ○ FLE- Farmers Led Experimentation ○ Cash crops, spices, vegetables and legumes cultivation support- training, input support, technical support ○ Bio-fertilizer and pesticide promotion and technology transfer